

# 2747 ORIOLE DRIVE

## LOT 27 - The Bradford

/ 40' FRONT  
 / SINGLE DETACHED  
 / 4 BEDROOMS / 2355 SQFT

**BUILD STATUS: UNDER CONSTRUCTION**  
**POSSESSION IN: 30 DAYS**

LIST PRICE: \$588,399.19  
 SAVINGS: \$2,499.19

MOVE-IN-READY PRICE  
**\$ 585,900.00**



## FLOOR PLANS

BASEMENT



MAIN FLOOR



SECOND FLOOR

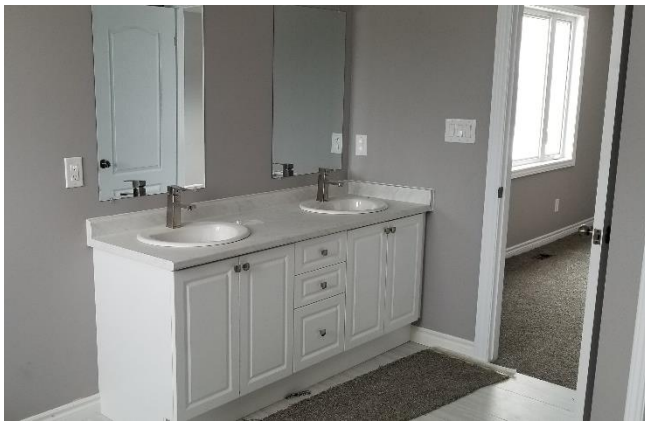
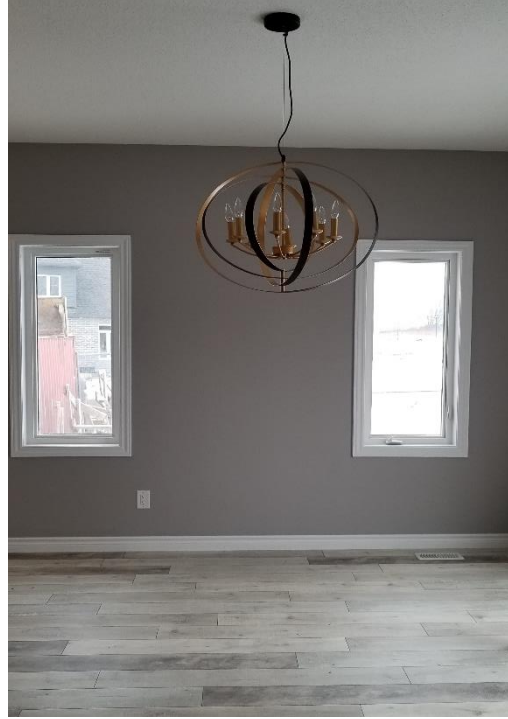


learn more about Sunlight Heritage Homes at [www.sunlighthomes.ca](http://www.sunlighthomes.ca)  
 have a question? E-mail us at [info@sunlighthomes.ca](mailto:info@sunlighthomes.ca)  
 or call at 519 653 5036



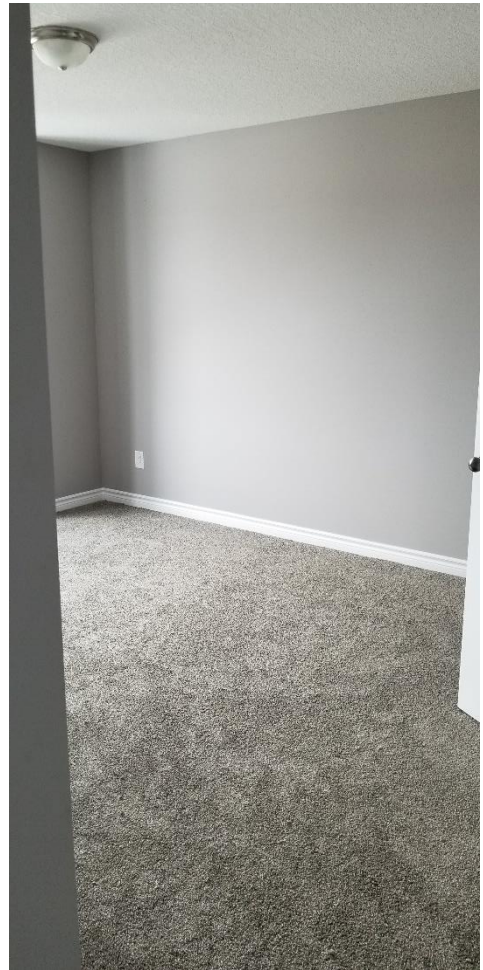
this brochure was created on January 7th, 2019

# INTERIOR PHOTOS



learn more about Sunlight Heritage Homes at [www.sunlighthomes.ca](http://www.sunlighthomes.ca)  
have a question? E-mail us at [info@sunlighthomes.ca](mailto:info@sunlighthomes.ca)  
or call at 519 653 5036





learn more about Sunlight Heritage Homes at [www.sunlighthomes.ca](http://www.sunlighthomes.ca)  
have a question? E-mail us at [info@sunlighthomes.ca](mailto:info@sunlighthomes.ca)  
or call at 519 653 5036



## OPTIONS / UPGRADES IN THIS HOME

A 01 – Brick Ledge 16”H  
A 09 – Additional Window 24x54 Casement x 2 – Dining Room  
A 09 – Additional Window 40x40 Casement – Stairs  
A 13 – Coloured Windows Front Only  
A 20 – Central Air 4 (over 2000 sqft)  
A 31 – Oak Railings in Lieu of Half Walls - Landing to second floor  
A 39 – Central Vac Rough In  
A 42 – Ensuite Bath Tub Free Standing – in lieu of drop in  
A 47 – Cold Room with Concrete Porch  
A 50 – 2/3/4 Pc Rough in in Basement  
Appliances – Bossino Range Hood  
Brick – Address Stone 12x24  
Cabinets – 36” Uppers  
Cabinets – Kitchen Soft Close to STD. Kitchen  
Cabinets – Light Valance LV11  
Cabinets – Microwave Cabinet Above  
Cabinets – Soffit System S124  
Electrical – 24” Light Valance Installed x 2  
Electrical – 36” Light Valance Installed x 2  
Electrical – Extra Switch x 2 – one for capped lights over island; one for light valance  
Electrical – Pot Light Interior x 7 – Kitchen (3) and Living Room(4)  
Electrical – Capped Light over Island x 2  
Flooring – Ceramic - Added to WIC  
Flooring – Ceramic Tile LV1 Ensuite Shower  
Flooring – LV1 Ceramic Tile Fireplace Accent Wall  
Flooring – 12 x 24 Tile  
Flooring – Carpet LV1 Bedroom 2  
Flooring – Carpet LV1 Bedroom 3  
Flooring – Carpet LV1 Bedroom 4  
Flooring – Carpet LV1 Master Bedroom  
Flooring – Carpet LV1 Upper Hall  
Flooring – Carpet LV1 Staircase 9’ Ceiling  
Flooring – Carpet Underpad 8lbs  
Granite – Extended Bar 36” x 7.5LF  
Heating – Electric Fireplace 34”  
Paint – LV 1 Paint Colour  
Paint – Stain on Railings  
Plumbing – Bathroom Accessories x 3  
Plumbing – Custom Glass Shower Half Wall – Main Bathroom  
Plumbing - Kitchen Faucet Caledon II  
Plumbing – Vanity Faucet M05-1S x 4  
Plumbing – Kitchen Sink Atlantic 50/50

learn more about Sunlight Heritage Homes at [www.sunlighthomes.ca](http://www.sunlighthomes.ca)  
have a question? E-mail us at [info@sunlighthomes.ca](mailto:info@sunlighthomes.ca)  
or call at 519 653 5036



Quartz – LV2 Extended Countertop

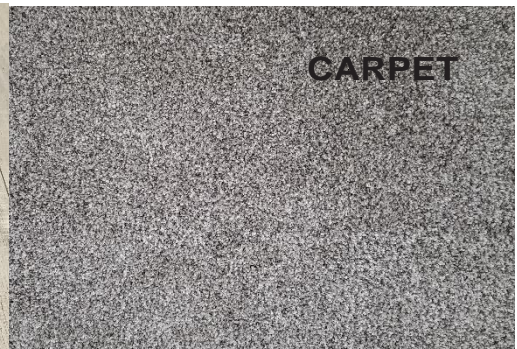
UPGRADES VALUE  
**\$70,963.40**

NOT ALL OPTIONS OR EXTRAS MAY BE LISTED ON THIS SHEET AT THIS TIME. PLEASE CONTACT SUNLIGHT HERITAGE HOMES IF YOU REQUIRE FURTHER INFO.

# COLOUR SELECTIONS



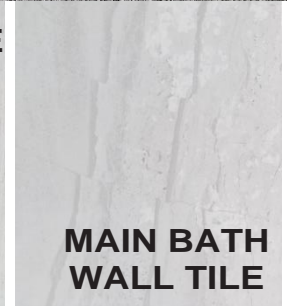
LAMINATE



CARPET

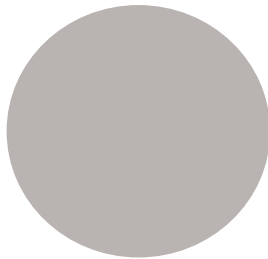


FLOOR TILE



MAIN BATH  
WALL TILE

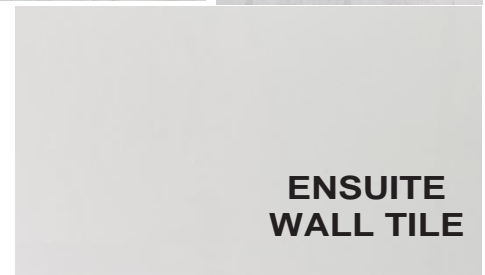
## EXTERIOR



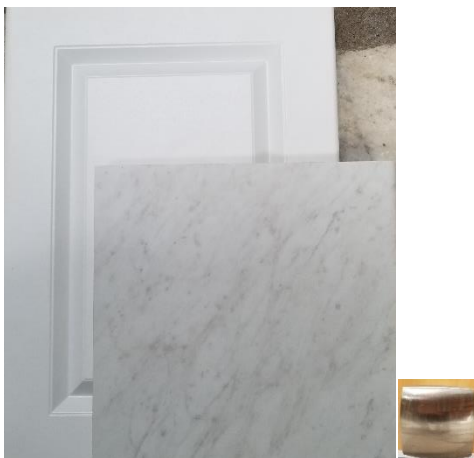
PAINT



FIREPLACE WALL  
TILE



ENSUITE  
WALL TILE



BATHROOMS



KITCHEN

learn more about Sunlight Heritage Homes at [www.sunlighthomes.ca](http://www.sunlighthomes.ca)  
have a question? E-mail us at [info@sunlighthomes.ca](mailto:info@sunlighthomes.ca)  
or call at 519 653 5036

