

2860 HEARDCREEK TRAIL

LOT 38 - Belair

/ 46' FRONT
 / SINGLE DETACHED
 / 4 BEDROOMS / 2447 SQFT

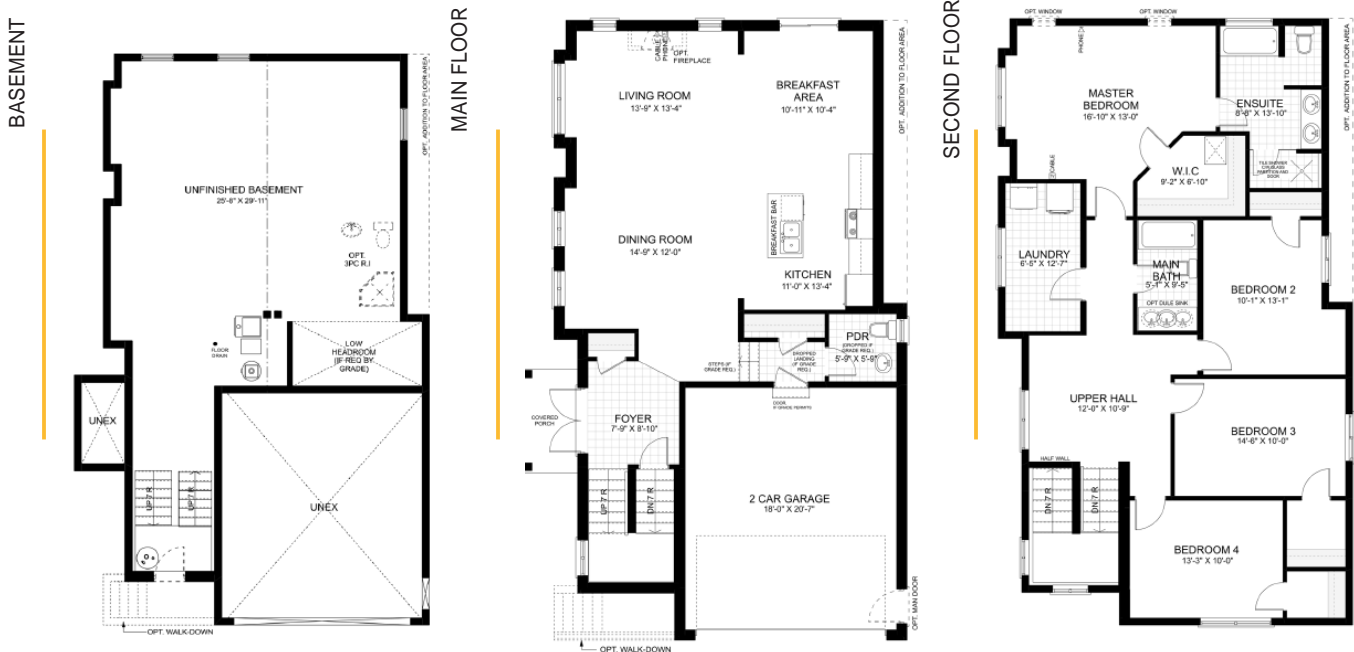
BUILD STATUS: UNDER CONSTRUCTION
POSSESSION IN: 130 DAYS

LIST PRICE: \$ 755,818.57
 SAVINGS: \$5,918.57



MOVE-IN-READY PRICE
\$ 749,900.00

FLOOR PLANS



learn more about Sunlight Heritage Homes at www.sunlighthomes.ca
 have a question? E-mail us at info@sunlighthomes.ca
 or call at 519 653 5036



this brochure was created on August 20, 2019

EXTERIOR & INTERIOR PHOTOS



learn more about Sunlight Heritage Homes at www.sunlighthomes.ca
have a question? E-mail us at info@sunlighthomes.ca
or call at 519 653 5036



OPTIONS / UPGRADES IN THIS HOME

A 13 – Colored Windows (Entire House)
A 17 – Steel Man Door (Garage to Exterior of Home)
A 31 - Oak Railings in Lieu of Half Walls
A 43 – Add Laundry Tub
Appliances – Range Hood – Supreme Pro 30”
Backsplash – Level 3
Brick – Level 1 41’-60’ Lot
Cabinets – 30” Pantry 12” or 24” Deep
Cabinets – 45- ½” Upper Cabinets Stacked
Cabinets- Bank of Pot & Pan Drawers
Cabinets – Base Micro Cabinet w/ Lower 14” Door
Cabinets – Frame Doors with Glass
Cabinets – Increased Height to Upper Wall Cabinet
Cabinets – Island Cabinets
Cabinets – Laundry Base Cabinetry
Cabinets – Laundry Upper Wall Cabinetry 30 ½”
Cabinets – Soffit System S124
Cabinets – Upper and Lower Cabinetry (30 ½”H Up)
Electrical – Extra Switch
Electrical – Pot Light LED Interior x 6
Electrical – TV Mount Combo
Electrical – Capped Lights Over Island x 3
Flooring – Additional Choices for Ceramic
Flooring – Ceramic in Foyer
Flooring - 12 x 24 Tile (4 choices)
Granite – (Where No Granite is Included) Ensuite and Kitchen
Granite – Standard Extended Bar
Heating – Gas Fireplace
Interior Trim – Shaker Fireplace Mantel
Paint – Level 1 Color
Plumbing- Second Sink in Bathroom (Main bath)
Plumbing – Bathroom Accessories x 3
Plumbing – Custom Glass Shower Enclosure
Plumbing – Free Standing Oval Tub
Plumbing – Kitchen Faucet Swan
Plumbing – Murano Rainfall Shower System

Plumbing –Undermount Sink x 2 in Ensuite
Plumbing – Water Line for Fridge
Plumbing – Kitchen Sink-Atlantic Max Plus
Structural – Walk Down to Basement from Outside

UPGRADES VALUE
\$66,318.57

NOT ALL OPTIONS OR EXTRAS MAY BE LISTED ON THIS SHEET AT THIS TIME. PLEASE CONTACT SUNLIGHT HERITAGE HOMES IF YOU REQUIRE FURTHER INFO.

learn more about Sunlight Heritage Homes at www.sunlighthomes.ca
have a question? E-mail us at info@sunlighthomes.ca
or call at 519 653 5036



COLOUR SELECTIONS



EXTERIOR



PAINT



**ENSUITE
WALL TILE**

FLOOR TILE

**MAIN BATH
WALL TILE**



**KITCHEN
BACKSPLASH**



MAIN BATHROOM



KITCHEN & ENSUITE

learn more about Sunlight Heritage Homes at www.sunlighthomes.ca
have a question? E-mail us at info@sunlighthomes.ca
or call at 519 653 5036

