

289

FAIRWAY ROAD

LOT 07 - THE WESTWOOD

/ 50' FRONT
/ SINGLE DETACHED
/ 2 BEDROOMS / 1612 SQFT

**BUILD STATUS: UNDER
CONSTRUCTION**
POSSESSION IN: 15 DAYS



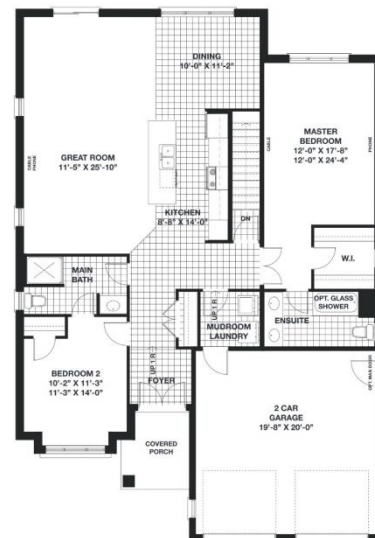
MOVE-IN-READY PRICE
\$ 495,900

FLOOR PLANS

BASEMENT



MAIN FLOOR

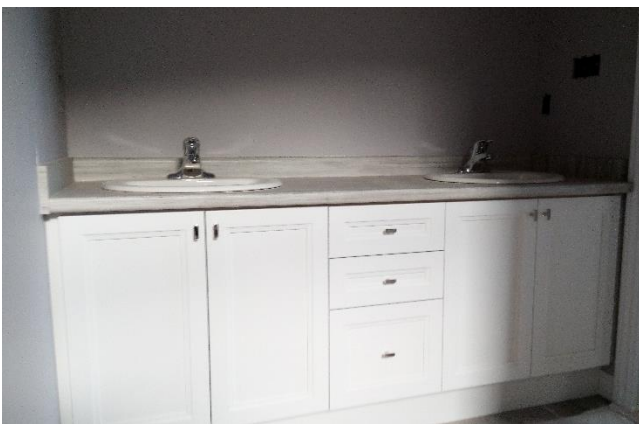
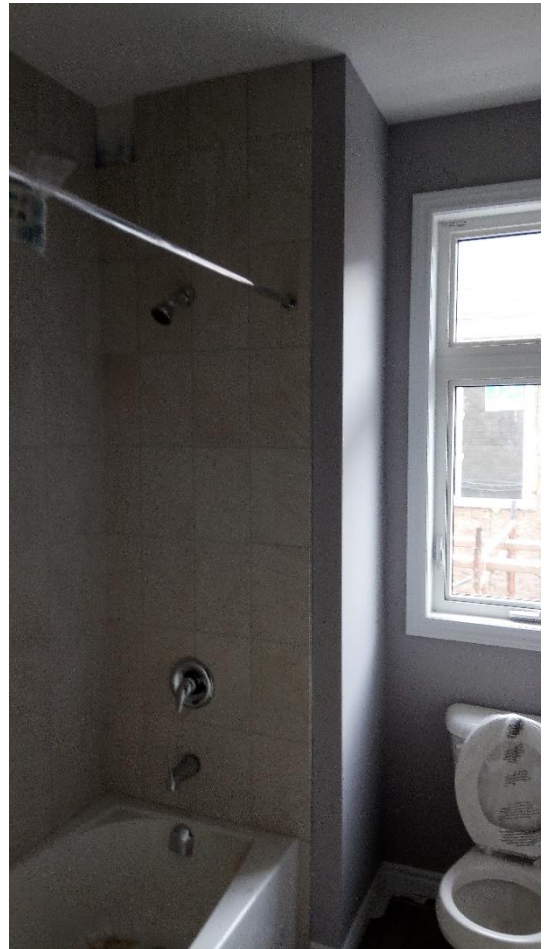


learn more about Sunlight Heritage Homes at www.sunlighthomes.ca
have a question? E-mail us at info@sunlighthomes.ca
or call at 519 653 5036

Sunlight
Heritage Homes

this brochure was created on December 19th 2017

INTERIOR PICTURES



learn more about Sunlight Heritage Homes at www.sunlighthomes.ca
have a question? E-mail us at info@sunlighthomes.ca
or call at 519 653 5036



this brochure was created on December, 19th 2017

OPTIONS / UPGRADES IN THIS HOME

Appliances – SS Microwave
Backsplash – LV2
Brick - Address Stone 12 x 12
Cabinets – 45-1/2” Upper Cabinets
Cabinets – Built in Microwave Over Stove
Cabinets – Deep Cabinet Above Fridge
Cabinets – Light Valance LV11
Cabinets – Soffit System S124
Cabinets – Two Tone Kitchen
Electrical – 24” Light Valance Installed (2)
Electrical – Dining Room Light Fixture
Electrical – Central Vac R/I
Electrical – Extra Switch for Capped Light
Electrical – Extra Switch for under cabinet lights
Electrical – Extra Switch for ceiling light in main bath and ensuite
Electrical – Light Complete with Fixture in Main Bath and Ensuite
Electrical – Front Entrance Light Fixture
Electrical – Kitchen Light Fixture
Electrical – Living Room Light Fixture
Electrical – Pendant Light Fixtures over Island (3)
Electrical – 3 Capped Lights Above Island
Flooring – 12 x 24 Tile (in lieu of std. tile in wet areas)
Flooring – Carpet LV1 Staircase
Flooring – Ceramic Tile LV1 Ensuite
Flooring – Ceramic Tile LV1 Foyer
Flooring – Ceramic Tile LV1 Main Bathroom
Flooring – Ceramic Tile LV1 Mudroom
Flooring – Eng. Hardwood LV. 1 All Bedrooms
Flooring – Eng. Hardwood LV. 1 Dining Room
Flooring – Eng. Hardwood LV. 1 Kitchen
Flooring – Eng. Hardwood LV. 1 Main Hall
Flooring – Eng. Hardwood LV. 1 Great Room (Incl.)
Plumbing - 3/4 PC R.I. Basement Bath
Plumbing – Custom Glass Shower Enclosure w/Door (Main Bath)

Plumbing – Fridge Water Line
Plumbing – Kitchen Faucet
Quartz – Granite to LV2 Quartz
Quartz – LV2 Extended Bar
Structural – Cold Room

UPGRADES VALUE
\$40,572.08

NOT ALL OPTIONS OR EXTRAS MAY BE LISTED ON THIS SHEET AT THIS TIME. PLEASE CONTACT SUNLIGHT HERITAGE HOMES IF YOU REQUIRE FURTHER INFO.

learn more about Sunlight Heritage Homes at www.sunlighthomes.ca
have a question? E-mail us at info@sunlighthomes.ca
or call at 519 653 5036



COLOUR SELECTIONS

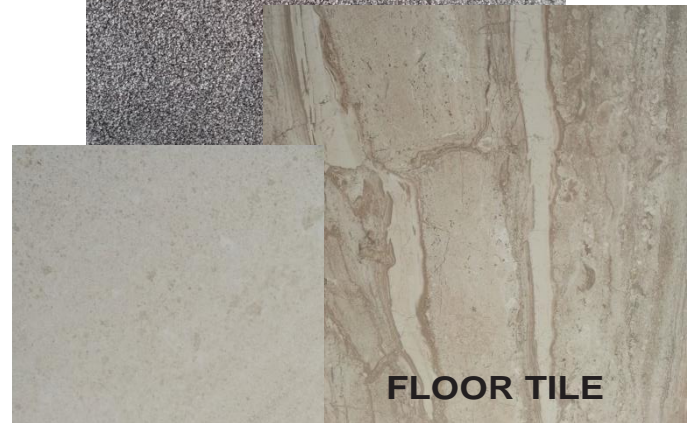
KITCHEN



CARPET



BACKSPLASH



FLOOR TILE



WALL TILE



PAINT



MAIN BATHROOM



ENSUITE BATHROOM

this brochure was created on December, 19th 2017

learn more about Sunlight Heritage Homes at www.sunlighthomes.ca
have a question? E-mail us at info@sunlighthomes.ca
or call at 519 653 5036

