

87 YVONNE CRES

LOT 03 - THE ORCHID

/ 31' FRONT
 / SINGLE DETACHED
 / 3 BEDROOMS / 2055 SQFT

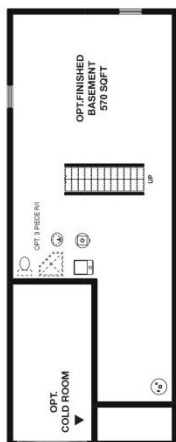
BUILD STATUS: UNDER CONSTRUCTION
POSSESSION IN: 30 DAYS

MOVE-IN-READY PRICE
\$ 374,800



FLOOR PLANS

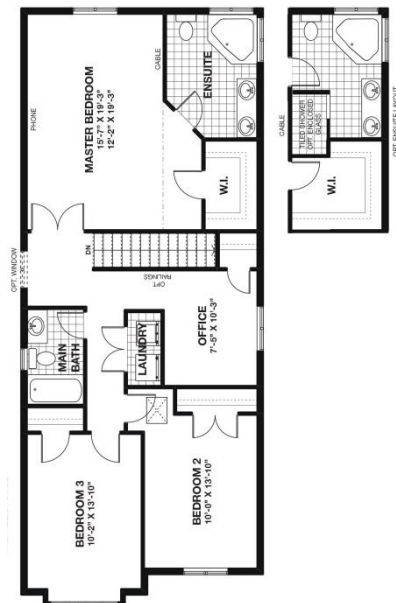
BASEMENT



MAIN FLOOR



SECOND FLOOR



learn more about Sunlight Heritage Homes at www.sunlighthomes.ca
 have a question? E-mail us at info@sunlighthomes.ca
 or call at 519 653 5036



this brochure was created on September, 20th 2017

OPTIONS / UPGRADES IN THIS HOME

Appliances – Chimney Style Range Hood BOSSINO

Brick – Address Stone 12x12

Cabinets – 24" Pantry

Cabinets – Crown molding CR1

Cabinets – Upper and Lower Cabinetry (1)

Cabinets – Island End Gable

Cabinets – Move Island Over 3' Away From Wall

Electrical – Extra Outlet on End of Island

Electrical – Pot Light Interior in Living Room (4)

Electrical – Capped Light Over Island (2)

Flooring – Vinyl to Ceramic Tile in Breakfast Area

Flooring – Vinyl to Ceramic Tile in Ensuite

Flooring – Vinyl to Ceramic Tile in Foyer

Flooring – Vinyl to Ceramic Tile in Kitchen

Flooring – Vinyl to Ceramic Tile in Laundry Room

Flooring – Vinyl to Ceramic Tile in Main Bathroom

Flooring – Vinyl to Ceramic Tile in Mudroom

Flooring – Vinyl to Ceramic Tile in Powder Room

Flooring – 12 x 24 Tile

Flooring – Engineered Hardwood LV1 in Bedroom 2

Flooring – Engineered Hardwood LV1 in Formal Dining Room

Flooring – Engineered Hardwood LV1 in Living Room

Flooring – Engineered Hardwood LV1 in Master Bedroom

Flooring – Engineered Hardwood LV1 in Office

Flooring – Engineered Hardwood LV1 in Upper Hall

Garage Door – Williamson

Interior Trim – Contemporary (1) 3

Interior Trim – Interior Single Door to Office

Paint – Stain on Railings (8)

Paint – Stairs Stained

Plumbing – 4/3 PC R.I Basement Bath

Plumbing – Ceramic Shower in Ensuite (Optional Layout)

Plumbing – Fridge Water Line
Plumbing – Move Sump Pump
Plumbing – Shower Door in Ensuite
Plumbing – Kitchen Faucet F-529-MYPS
Plumbing – Shower/Tub T2703
Railings – Standard Railing (3)
Stairs – Oak Stairs 8' Natural Finish
Tile – Insert Borders in Ensuite Shower and Main Bath Tub
Windows – Master Bedroom London Model Window
Windows – Sliding Stair Window
Windows – Egress Window 56 x 30 in Basement

UPGRADES VALUE
\$50,660.27

NOT ALL OPTIONS OR EXTRAS MAY BE LISTED ON THIS SHEET AT THIS TIME. PLEASE CONTACT SUNLIGHT HERITAGE HOMES IF YOU REQUIRE FURTHER INFO.

learn more about Sunlight Heritage Homes at www.sunlighthomes.ca
have a question? E-mail us at info@sunlighthomes.ca
or call at 519 653 5036

